

Esoteric physiology

1 inflammation and sclerosis as healing processes, consciousness and disease, ego organization, the fall of man

2 images, form, and life forces, catabolism, anabolism, Lucifer, blood exercise, marrow and spleen, vowels and consonants, immune response

3 blood exercise-capillaries, venous blood, arterial blood, secretion and excretion, egg division, embryonic disc development, autonomy

4 JS Bach the art of the fugue as an analog for esoteric physiology.

5 reference sources for physiology, anxiety, nutrition and consciousness, liver, spleen, kidney, uric acid, sclerosis patterns, the phantom

6 cosmic etheric, cosmic astral, elements, ego, blood, and I being, pituitary / yakim, pineal / boaz and the heart, hormonal cascade

7 nerve and blood, thinking and will, rhythmic healing force, sleeping, dreaming and moral imagination, mysticism and magic, curses, diabetic emotional patterns, healing verse

8 vowels and consonants as healers, allergic response, embryonic germ layers, astralization of embryo, embryonic organ development and temperament

9 sense activity and soul, aortic arches of heart, pituitary and pineal glands, sense experience and glands, inflammation sequences, sclerosis, pathological moods, aesthetic perception

10 digestion and ageing, gut problems, vegetable foods, health and emotions, tumor / embryo relationship, dreaming and feelings, primal light, kidney radiation, spirit embryo

11 the heart eye, imagination and inspiration, base brain, limbic system, moral imaginations, diabetes and aggression

12 emotional cascades, instinct, drive, desire, motive, mother love lower devachan, higher devachan, Christ Consciousness, the chakras

13 Rosicrucian work, ethers and elements, kamaloca, homeopathic silica process, characterological disposition, homeopathic remedies, flower essences, intoxication, staphysagria

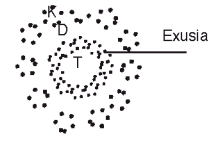
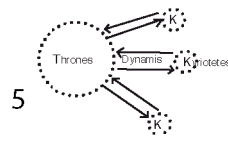
1
 Thrones- will- sensory germs
 Wisdom- the wise arrangement of the physical
 Motion- capacity for movement
 Form – human body receives plastic form (etheric or life forces and psychic capacity(image forming or astral forces)
 Archai- personality- similar to human earthly consciousness – develop sensory organs that treat images in such a way that they can perceive external objects- this inoculates humans with selfhood
 Sons of fire / archangels receive light images from Seraphim (spirits of love) that give them picture consciousness
 Sons of twilight / angels interact with the inner pictures. This makes it possible for the cherubim (spirits of harmony) to inspire the angels with dreamless sleep consciousness

2
 cosmic etheric- peripheral sculptural forces from starlight these forces move from the periphery to the center in a planar movement.
 cosmic astral- motions of the planets that interact with the peripheral forces and convert them into etheric formative forces- these have a musical quality and give rise to elements and the forces and laws of nature. These have been astralized to move from a center to the periphery.
 consolidating forces- these take hold of etheric formative forces and the elemental patterns and convert them into substances, secretions and excretions.

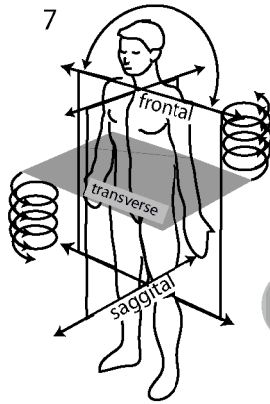
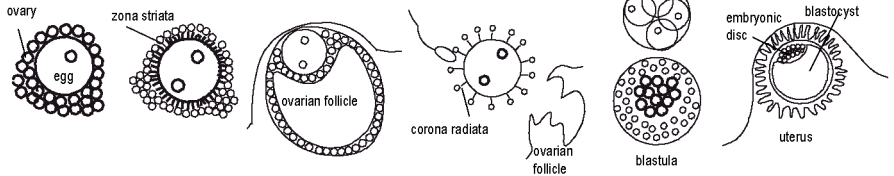
3
 ego organization- transforms growth forces into thinking source of healthy catabolism
 astral organization- personal soul forces and feelings source of the forms of the organs of the body
 personal ether forces - support growth of organisms source of anabolism
 physical forces- mineral formations-elements source of forces and substances

4
 consonants T/S/R/M/AH this is to engage the life body with the plastic (rounding/ expanding) forces of the periphery (- consonants TSR are used to create a formative phantom (movement sheath or precondition for form) – Consonant sequence for INFLAMMATION/ ALLERGIES (etheric effusion) From the realm of the zodiac the rounding, creative imaginations and forms move inward to sculpt the organs in the embryo.
 vowels L/AH/O/U/M– this is to engage the astral body a pull it away from the centric focus on the physical and move towards the periphery.. vowels L and M are used for re-enlivening sclerotic conditions SCLEROSIS / ASTHMA This is done with the vowels that entrain the movements of the planets. The action of the soul in awake consciousness is to centralize and fragment the life forces. When taken too far this gesture becomes one of condensing, consolidating and holding on to substance (sclerosis).

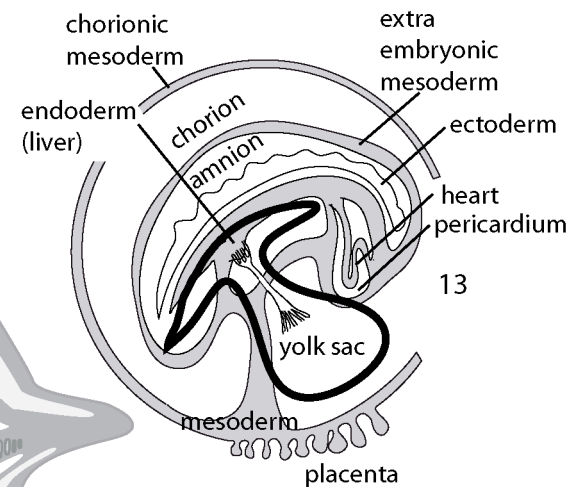
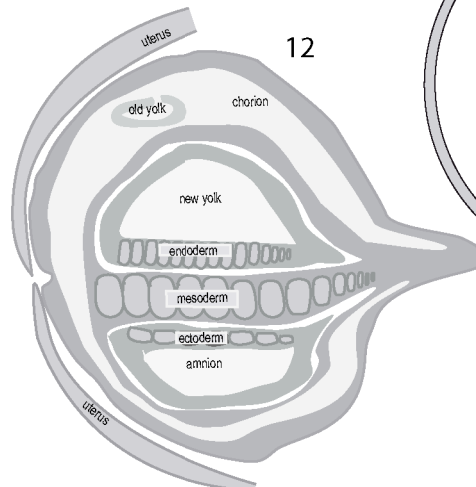
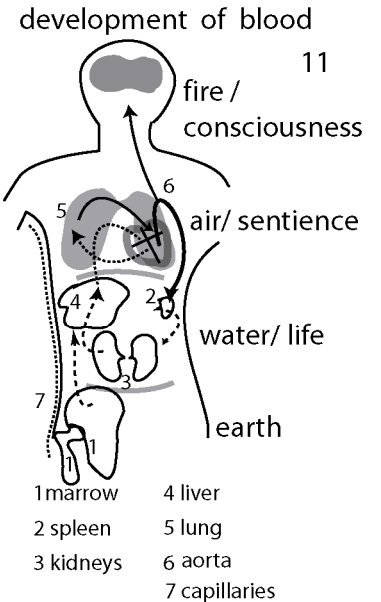
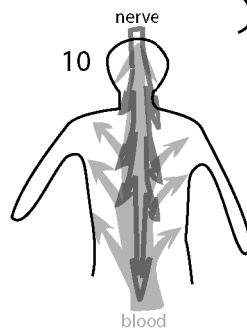
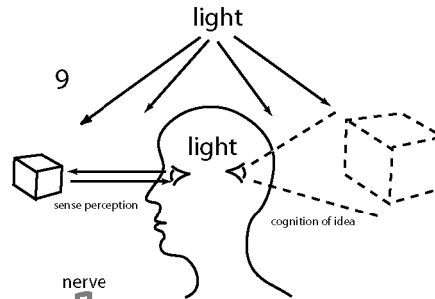
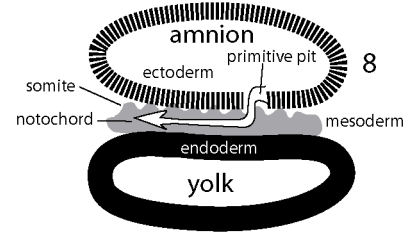
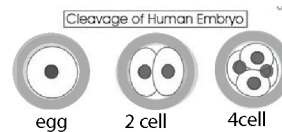
page 1

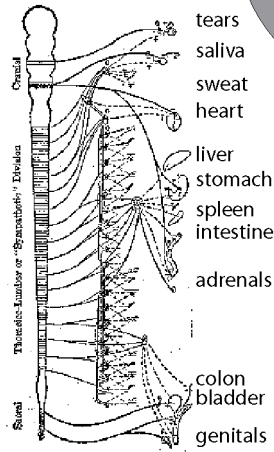
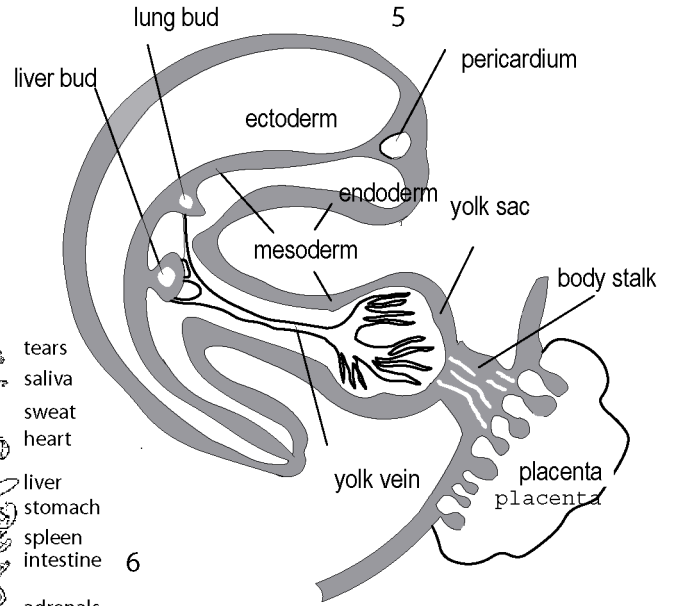
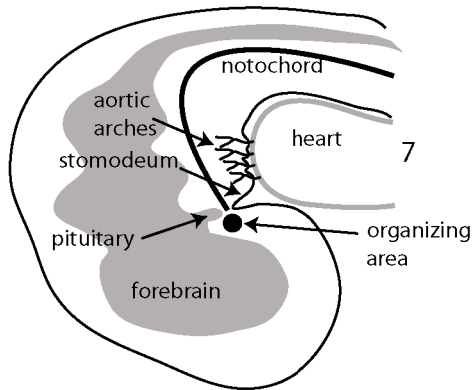
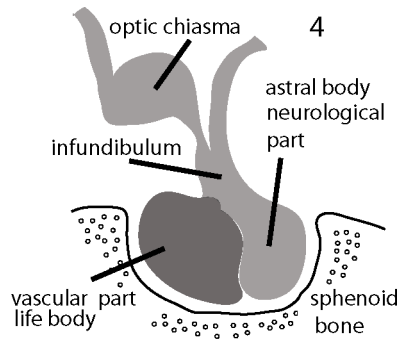
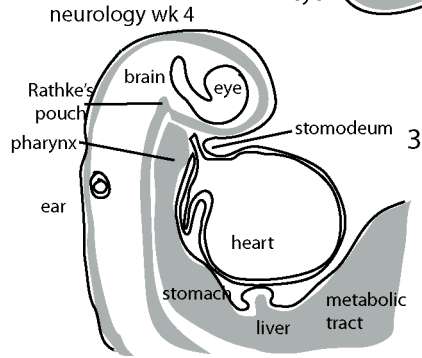
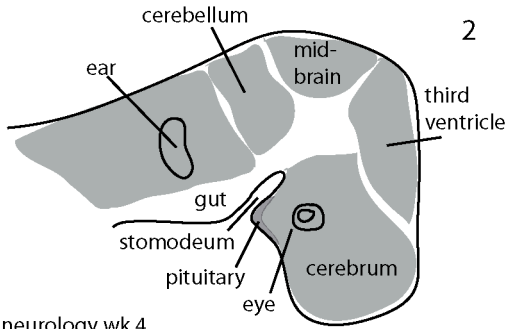
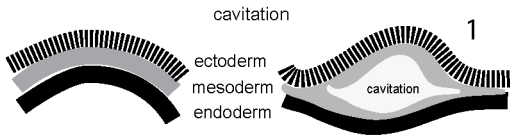


sheet 1



6





autonomic nervous system

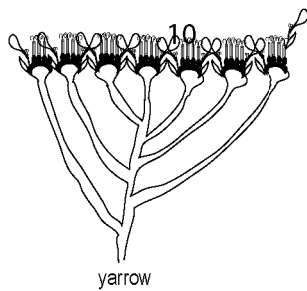
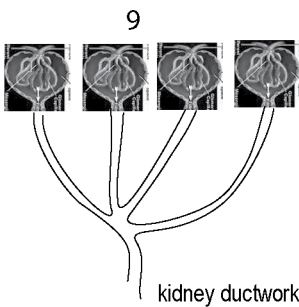
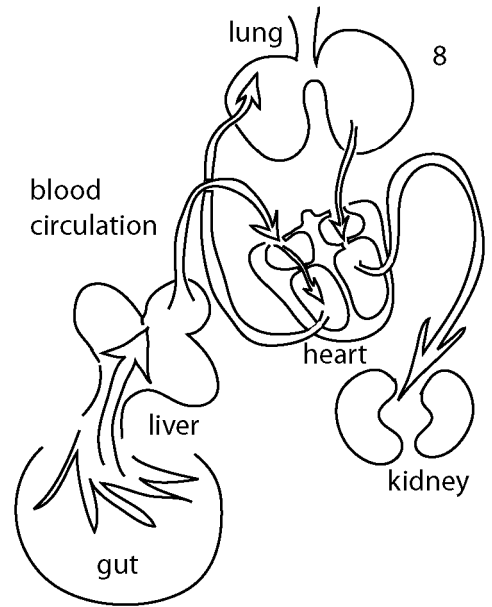
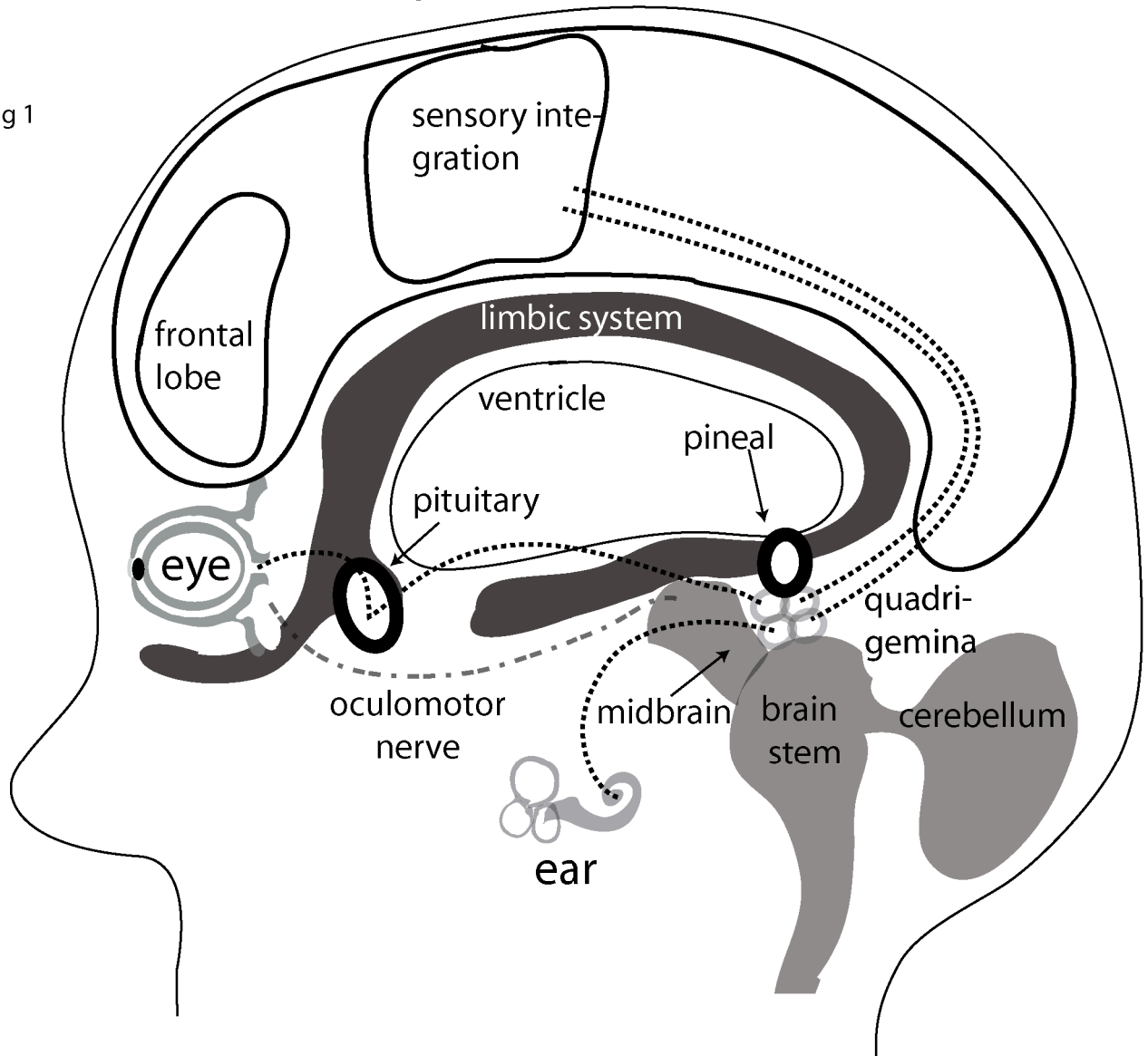
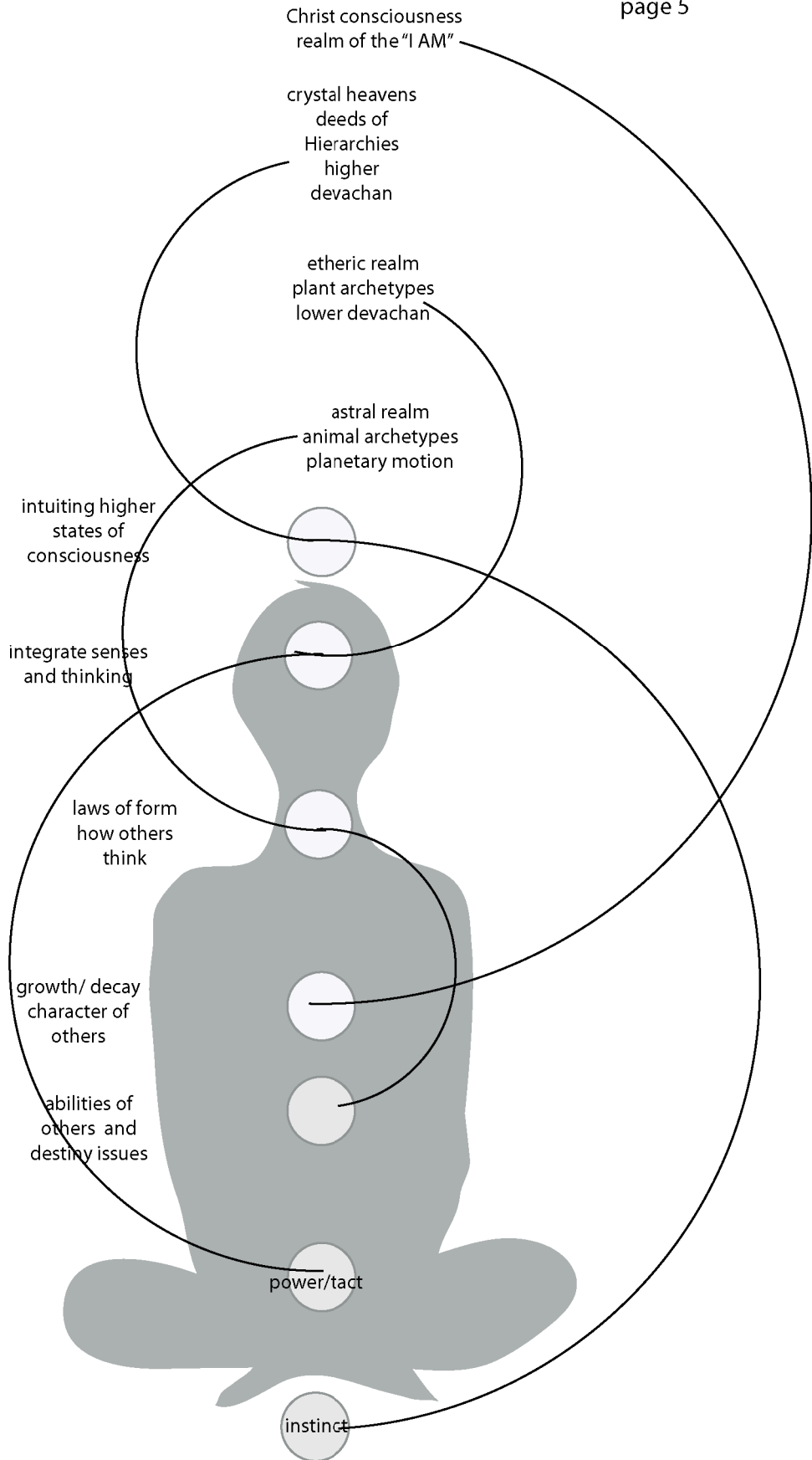


fig 1





Octaves of the chakras



mirror
measure3 tail 1 tail 2

8 mirror counterpoint 3

fugue 1 theme

4 2 2 1 1 1 1 pitches

2 2 2 2 2 1 1 2 1 1 time

time values-quarter notes=1 beat

Contrapunctus IV

3 fugue 3 harmonic wave

Contrapunctus V

4 fugue 4 triple note motif

Contrapunctus VI
In French style

5 four harmonious perfection of mirror

Contrapunctus VII
In Augmentation and Diminution

NO FIGURE FOR TRIPLE THEME

5 Contrapunctus I

7

half rise qtr. rise trill rise new
fall

concentration-fugue 8

femur phrase

optic phrase

brain phrase

Cerebral hemisphere
Superior cerebellar art.
Cerebellum

Page1 Quotes

KEY MOTIF -POTENTIAL / MANIFEST All physiological processes occur as tension between two polar states of activity. One state is characterized as having potential to manifest the other state is characterized as the manifest state. The potential state is composed of creative movements. The manifest state is composed of form. In physiology form creates a condition where what is formed initiates a process of breakdown. The breakdown goes through a series of steps in time (movements or processes). The movements lead to another buildup of potential.

KEY MOTIF CATABOLISM / INFLAMMATION / ANABOLISM The spirit unfolds in the human not on the basis of anabolic activity but on that of catabolic activity. The arising of thought is based on a disintegration of the etheric body with its processes of growth.

As substances are excreted(separation of substances to get rid of particular substances) from organs, forces are released that are used by the organism for the purposes of developing consciousness. This is the catabolic action of the astral body. As the fluids of the body become free of their substantial burden, forces of consciousness are released into the soul or astral body. This is the blood in the arterial system and the bones, muscles and nerves). These forces take will on the part of the human being. In pathologies the free flowing of the fluids after catabolism is the fundamental process of inflammation. Inflammation is the turning from the disintegrating force of the astral body towards the anabolic healing activity of the etheric body.

In the astral body substances are broken down. By contrast in the ether body forces are developed into substances. This is the anabolic sequence following inflammation. Prime areas for this phase are the blood in the venous system and the digestive organs of liver, gall and spleen. The anabolic growth forces of the ether body are given to the human being from the cosmos as light.

KEY MOTIF TWO NUTRITION STREAMS --PRODUCING OF LIGHT IMAGES / CONSCIOUS AND UNCONSCIOUS

Through the taking in of substances the world enters into the organism. The substances themselves can be thought of as an earthly nutrition stream. That stream creates secretions in glands and organs as the organism seeks to balance the impact of the substances and maintain sovereignty over the influx from the world. The consciousness of this is an inner experience of resistance to the world. This level of consciousness is subconscious and is dominant in the autonomic nervous system.

Taking in sensations from the world also creates secretions and stimulates the glands and organs of the body. The forces from these experiences can be called a cosmic nutrition stream. This is also a form of the feeling of resistance to the world but the soul has access to this feeling of resistance through the production of inner pictures. This level of consciousness is awake and is dominant in the central nervous system.

VOWEL AND CONSONANT SEQUENCES

consonants T/S/R/M/AH this is to engage the **life body** with the plastic (rounding/ expanding) growth forces of the periphery (- consonants TSR are used to create a formative phantom ([movement sheath or precondition for form](#)) – Consonant sequence for INFLAMMATION/ ALLERGIES (etheric effusion) From the realm of the zodiac the rounding, creative imaginations and forms move inward to sculpt the organs in the embryo. In the consonantal sequence these forces are drawn into the life body to dampen down an excessive or allergic life body reaction to outer stimuli. In acute infections the life body supports the immune reaction by stimulating the lymphatic system in the production of inflammation which is the acute reaction against the invading pathogen. In allergy, the expansive life body has become too strong because of chronic conditions of inflammation and unlawfully pushes the astral body beyond the confines of the organism. This arises in allergic sensory responses to outer influences. The consonants balance the life body with harmonizing patterns of creative rhythmic movement. This allows the life forces to work back onto the organism in a healing way. Consonant sequences are especially regulating and harmonizing in disturbances of the metabolism, the lung, liver, and kidney and venous anabolic pathways.

PAGE 2 quotes

vowels L/AH/O/U/M– this is to engage the **astral body** a pull it away from the centric focus on the physical and move towards the periphery.. vowels L and M are used for re-enlivening sclerotic conditions SCLEROSIS / ASTHMA This is done with the vowels that entrain the movements of the planets. The action of the astral body in awake consciousness is to establish a center of activity in the physical body and from there work to consume and fragment the life forces. When taken too far this gesture becomes one of condensing, consolidating and holding on to substance (sclerosis). The life body that is overshadowed by the astral forces and pushed into the consolidating forces of the physical body then loses contact with its source of enlivening growth forces of the periphery. This occurs when the astral body pushes in too far into the physical organism. Its sensory nature creates a shadow sensory area in a part of the organism where conscious sense activity is not appropriate. The vowels awaken the human consciousness to a correct relationship organically with the life forces. The vowels draw the consciousness together in such a way as to support the individuality with harmonious spiritual wakefulness. This rhythmical or musical consciousness allows the person to release the life forces from the grip of the crystallizing and consolidating tendency of an over active astral and ego organization driving the life forces into the center of the physical body. Alternating consonantal and vowel movements is the most effective method for healing disturbances in the organism.

QUOTES FROM RUDOLF STEINER

(session 1) RS fundamentals of therapy/ the form giving process (astral)

1 "separation of higher level from a lower level is the first step in the formation of substances." This is the process of separating an ether from an element. Take for instance the presence of sugar in the sap of a plant. The substances of carbon, hydrogen and oxygen are kept in a levity state within the sap by the action of the life of the plant and the capacity for the life to interact in chemical affinities. The life ether and the chemistry or tone ether are signatures of the two highest ethers. The substances of the plant are imbedded in the sap solution as the potential patterns by which sugars manifest. In the plant however these substances are still energetically engaged in the life of the plant, they are present as sentient or sensitive potentials for attraction and repulsion. Once the plant sap is taken from the living matrix of the plant its constituents begin to move towards manifestation. The ethers that animated the life and the chemistry separate from the sap and the substances fall into manifestations or images of the energetic patterns that they expressed in the living sap.

2 "Building form out of separated substance is second step" Once the carbon, oxygen and hydrogen have separated out of the ethers they are like notes of a melody which is no longer being played. The valences, bonding angles and molecular patterns of crystallization are fallen corpses of what once was a living, ordered, and un-manifest energetic entity. We can think of the forces animating a good friend as opposed to the substances of carbon, oxygen and hydrogen found in the tissues of their body. Which part of your friend elicits your friendship, the animating soul warmth and inner motion of their soul or their substances?

RS from Curative Education pg 65

For a phenomenon like that of the astral body becoming congested in the lung is due to the fact that the thought of the lung has not been properly membered into the organism. All such phenomena are accordingly due to the defects of thought. They are the result of our being unable as we descend into our organism, to gain the control of it in order that we may be able to build it up a second time.

(session 2) RS world of the senses world of the spirit (intellect and judgment)

Man was destined to be an onlooker of himself, it was not intended that he should live inside of himself. **From Lucifer man received the power of making the I have preponderance over the astral body.** . (*The preponderance of the I over the astral and etheric bodies is the source of illness*) It was this excessive egoism that is the Luciferic quality in man. If it had not been for Lucifer man who would never have hit upon the ridiculous idea that he has an intelligence inside him and that he himself cherishes thoughts within him. He would have known that he thoughts are outside him and that he has to look on at his thinking. Man would have always considered and contemplated and then waited till the thought was given to him., Waited until the purpose and meaning of the thought was revealed. Man would never have had the idea that he has to connect together all kinds of thoughts and form a judgment or opinion within himself. This forming of judgments within ourselves independent of revelation is the Luciferic nature within us... The mystery of Golgotha was

Page 3 Quotes

enacted in order to cure man of that singular arrogance and pride that manifests in a desire to comprehend everything by means of an intellect

(Session 3)RS anxiety and blood

Guidance in esoteric training- Munich Jan 16 1908 pp111-113

Feelings of anxiety have no place today and will have still less in the future. What occurs when we feel anxious? The blood is driven back into the center of the human being, and into the heart, in order to form a firm central point and make the human being strong in opposition to the outer world. It is the inmost power of the "I" which does this. This power of the "I", which affects the blood, must become ever stronger and more conscious... What is harmful and unnatural today, however, is the feeling of fear that is connected with this flow of the blood. In the future, that must no longer be so; only the power of the "I" without fear must become active. In order for the human being to become equal to facing the evil powers of the future, he must take hold of the inmost strength of his "I". He must be consciously able to regulate the blood in such a way that it makes him strong in the face of evil, but wholly without anxiety. He must have in his power the strength to direct the blood inward.

(session 4) RS Foundations of esotericism Lecture 5 1905 (pituitary gland, pineal gland and warmth)

Just as the parallel organ to the ear is the organ of speech, so the parallel organ to the warmth of the heart is the pituitary gland, the hypophysis. The heart takes up the warmth from outside, as the ear does sound. Thereby it perceives world warmth. The corresponding organ that we must have, in order to be able to produce warmth consciously, is the pituitary gland in the head, **which at the present time is only at the beginning of its development.** Just as one perceives with the ear and produces with the larynx, so one takes up the **warmth of the world** in the heart and lets it stream forth again through the pituitary gland in the brain. Once this capacity has been achieved, the heart will have become the organ it was intended to be.

(session 5) Reappearance of Christ in the Etheric lecture 2

You must learn to comprehend the spiritual worlds in your I, through your I. The I has descended and is near at hand. It must no longer be sought in a world of rapture outside of consciousness! "Herein lies the greatness of the event that took place at the time of Christ: that through the natural evolution of human faculties, the old relationship with the spiritual worlds was lost and the attainment of I-consciousness was achieved, but that it was also possible as a result of this to gain consciousness of these spiritual worlds within the physical world. Christ thus became the mediator of the spiritual worlds for those human beings who have reached such a stage of

development that they can, in the I that lives on the physical plane, gain the connection with the spiritual world. Only after the event of Golgotha did Christ become visible in the atmosphere of the earth, because it is since that time that He has been present there. One who was experienced in clairvoyance during pre-Christian times knew that the time would come in which this would occur. "Change the disposition of your souls; do not believe any longer that the human being can ascend normally to the spiritual world by being enraptured; rather believe that through the development of capacities inherent to the I, and with the help of Christ, you can find the path leading into the spiritual worlds.

(session 6) Guidance in esoteric training- Munich Jan 16 1908 pp111-113

Our contemporary culture is itself creating horrifying monsters that will threaten the human being on Jupiter in the far future. You need only look at the huge machines which human technology is today constructing so ingeniously. The human being is creating demons for himself that in the future will rage against him. Everything that he builds today in the way of technical appliances and machines will assume life in the future and oppose him in terrible enmity. Everything that is created for mere utility to satisfy individual or collective egoism will be the human beings' enemy of the future. We are today far too concerned with gaining useful advantage from what we do. If we really wish to help advance evolution, we should not be concerned with the usefulness of something but with whether it is beautiful and noble... Everything beautiful and noble that we cultivate today leads to a strengthening of the good on Jupiter; everything that occurs as a result of egoism and utility leads to a strengthening of the bad.

PAGE 4 quotes

(session 7 tumor formation) RS lecture 9 etherization of the blood

Esoteric If we cultivate better thoughts we can work indirectly upon the will, but we can do nothing directly to the will that concerns life. This is because in our daily life our will is influenced only in an indirect way, namely, through sleep. When you are asleep you do not think; you do not form mental pictures. The will, however, awakes, permeates our organism from outside, and invigorates it. We feel strengthened in the morning because what has penetrated into our organism is of the nature of will... Because at night he is asleep regarding his intellect, he becomes unconscious of what he is undertaking with his will. What we call moral principles and impulses are working indirectly into the will. In fact, man needs the life of sleep in order that the moral impulses he absorbs through the life of thought can come into effective activity. In his ordinary life today, man is capable of accomplishing what is right only on the plane of intellect; he is less able to accomplish anything on the moral plane, for there he is dependent upon help coming from the macrocosm.

(session 8) cont. from session 4 quote - RS Foundations of esotericism Lecture 5 30 september 1905

Somewhat deeper in evolution than the warmth organ stands the organ of sight. In the course of evolution the organs of hearing, warmth and sight, follow in sequence; the organ of sight is only at the stage of receiving, but the ear already perceives, for instance in the sound of a bell, its innermost being. Warmth must flow from the being itself. The eye has only an image, the ear has the perception of innermost reality. **The perception of warmth is the receiving of something that rays outwards.** (WARMTH- ENTHUSIASM AND RECOGNITION) There is an organ that will also become the active organ of vision. This is today germinally present in the pineal gland, the Epiphysis, **the organ that will give reality to the images which today are produced by the eye.** These two organs, the pineal gland and the pituitary gland as active organs, must develop into the organ of vision (eye) and the organ of warmth (heart). (HEART EYE) Today fantasy is the preliminary stage leading to a later power of creation. Now man has at most imagination. Later he will have magical power. It develops in proportion to the physical development of the pineal gland.

(session 9) Building organs of cognition in the astral body. Excerpted from Gospel of St John chapter11

The Christian Rosicrucian method is a training of the feeling and the will. The method involves the transformation of the soul through the use of imaginative pictures. The purpose is to cleanse the astral body of its reliance on inner pictures that only arise as the result of sense perception this happens when the astral body of the student is illuminated by the imaginations that exist in the cosmos. ...Organs of perception for these imaginations must be built by the student while in the awake consciousness so that the astral body in sleep can imprint its experiences on the life body. This process is called catharsis. ...With catharsis the portion of the astral body that is illuminated by the cosmic imaginations is called the Virgin Sophia. When the Virgin Sophia or purified astral body approaches the Cosmic or Universal Ego, the light of the Universal Ego shines down upon the Virgin Sophia and is received by the Virgin Sophia. This illuminating Universal Ego is known as the Holy Spirit. A person with these capacities loses the human inclination to form opinions. His or her personal Ego has been eclipsed and he or she speaks out of cosmic wisdom rather than personal viewpoint. The most important point about this transformation is to speak without sympathy or antipathy towards one or the other viewpoint

(Session 10)From Rosicrucianism and Modern Initiation Dornach 1924

The Rosicrucians made themselves acquainted with all that could be discovered about Nature and received it into themselves. What for others was science they enhanced into true wisdom. Holding it in their souls, they then tried, after deep meditation, to pass over into sleep in a condition of the highest possible purity. And it was so that then the divine spiritual worlds brought back to them in a spiritually real language what had first been apprehended in abstract ideas. It was the Rosicrucians who realized that that which human beings carry forth in modern knowledge must first be offered back to the Gods so that the Gods may translate it into their language and give back to humans again. Learn all that can be learned through natural science of today and then carry it back again towards the Gods (ABC-CBA before sleep). You will get what is related about evolution in my Occult Science. Such is the connection between the feeble knowledge that human beings can acquire here with the physical body and sense perception and the transformed knowledge that the Gods can give back when the external knowledge is studied in the proper manner. For man must first bring to the Gods what he can learn here on Earth. Thus is the Natural Science of today the true basis for spiritual seership.